

COFFEE GRINDER E80W GBS | QUICK GUIDE

Hemro International AG Thurgauerstrasse 80 | 8050 Zurich, Switzerland
T: +41 44 864 18 00 | F: +41 44 864 18 01 info@hemrogroup.com | www.hemrogroup.com



Detailed information at:

Product Page



https://hemro.net_E80W_GbS_Product

Software Manual



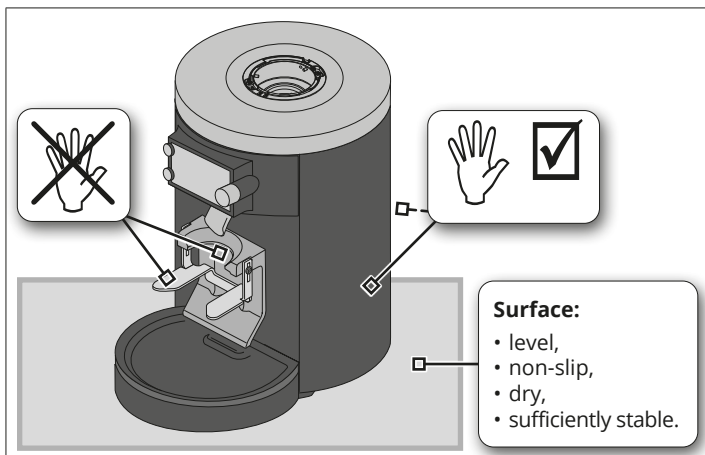
https://hemro.net_E80W_GbS_Software_Manual

Service Videos

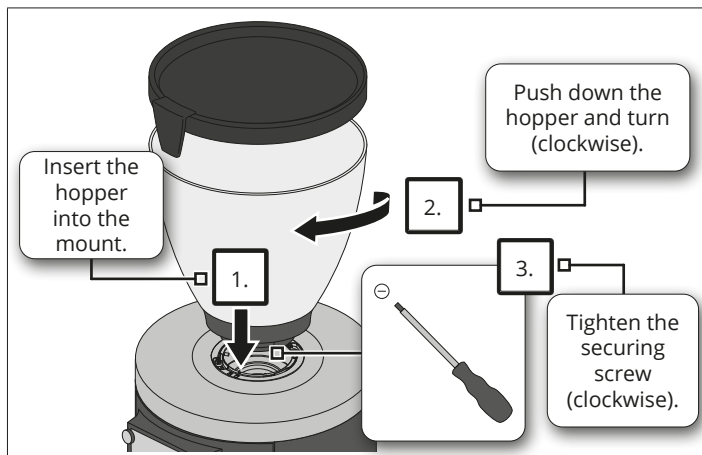


https://hemro.net_E80W_GbS_Service_PlaylistYouTube

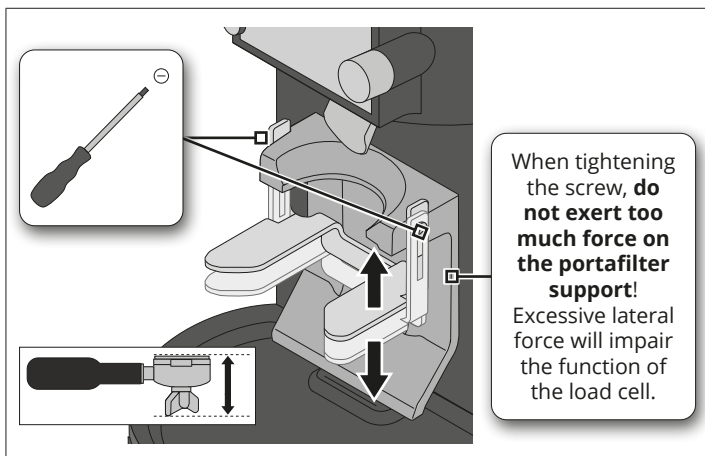
Setting up the grinder



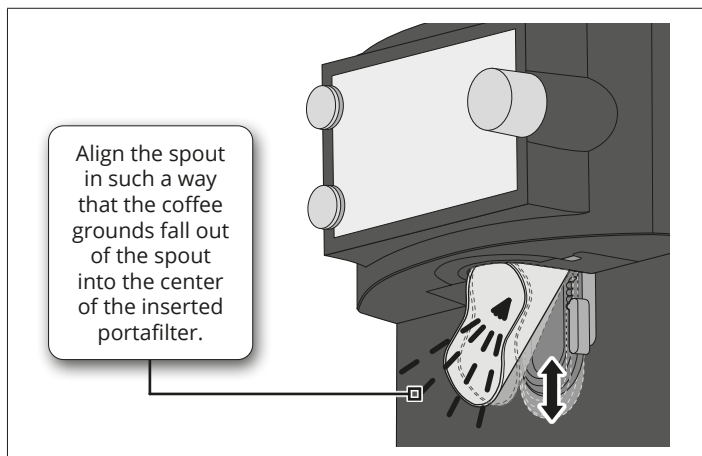
Inserting the hopper



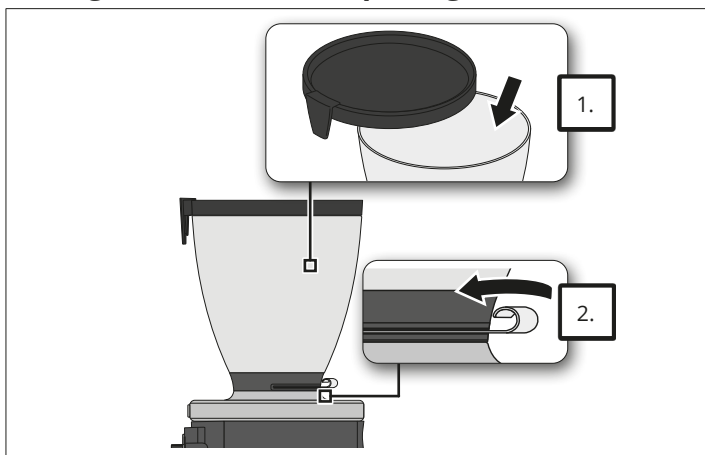
Adjusting the portafilter support



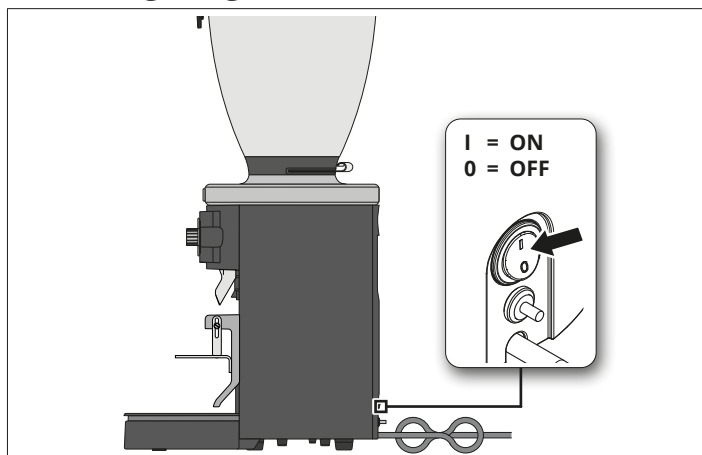
Aligning the spout



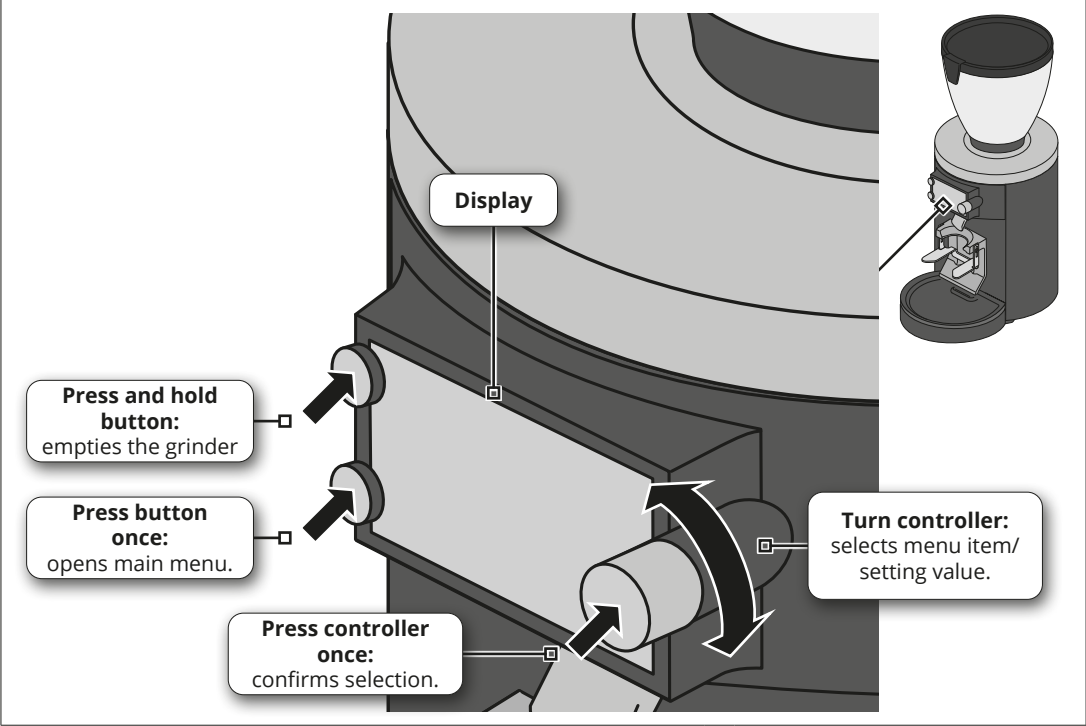
Filling with beans and opening the slider



Switching the grinder on/off



Operating the grinder / main functions of the operating elements



For detailed operating information, see:

Software manual



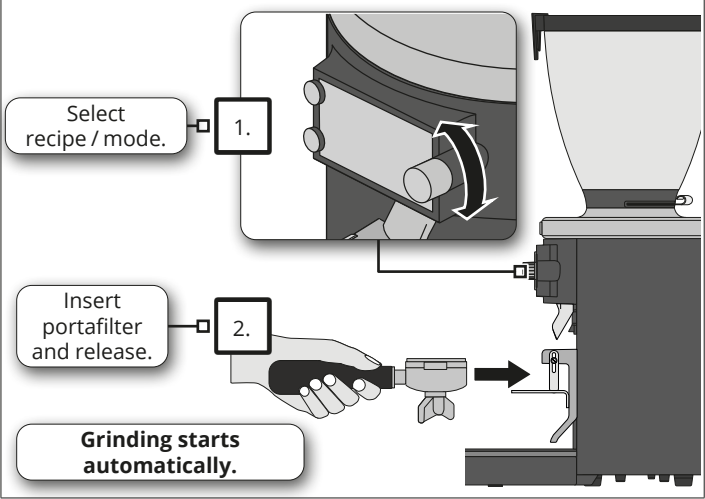
https://hemro.net_E80W_GbS_Software_Manual

Instruction manual

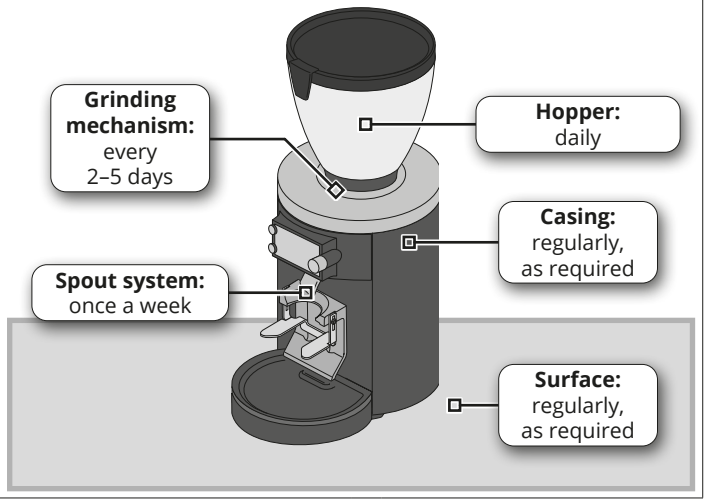


https://hemro.net_E80W_GbS_Product

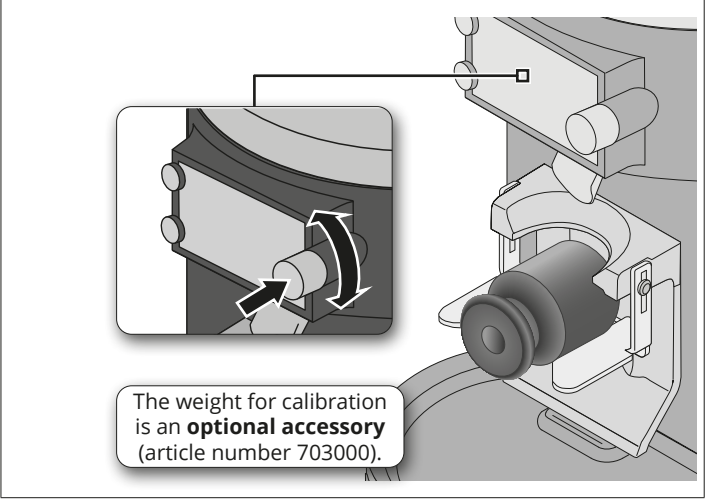
Starting the grinding process




Regular cleaning



Calibrate the load cell (as required)



Technical data

Model:	E80W GbS		
Voltage frequency phase:	100 V 50/60 Hz 1~ 110-127 V 60 Hz 1~ 220-240 V 50/60 Hz 1~		
Protection type / Protection class:	IPX1 / I 		
Back-up fuse:	16 A-slow/15 A		
Idle speed (50 / 60 Hz):	1400 / 1700 rpm		
Sound emission value ¹ :	70 dBA		
Grinding capacity (fine-coarse) ² :	6-8 g / s @ 60 µm		
Max. permitted operating cycle			
100 V 50/60 Hz:	110-127 V 60 Hz:	220-240 V 50/60 Hz:	
10 double espressos / min (3 sec on / 3 sec off)	10 double espressos / min (3 sec on / 3 sec off)	10 double espressos / min (3 sec on / 3 sec off)	
Max. grinding time:	10 min in continuous operation		
Max. daily output:	90 kg		
Dimensions (W × H × D):	233 × 630 × 340 mm		
Weight (net):	15 kg		
Max. hopper filling quantity ³ :	1.8 kg		

1) While grinding.
2) The grinding capacity depends on the coffee bean type selected, the grinding degree selected and the power frequency. The value 60 µm corresponds to the grinding disc distance from the calibrated zero point.
3) Standard hopper.