

# COFFEE GRINDER E65W GBS | QUICK GUIDE

Hemro International AG Thurgauerstrasse 80 | 8050 Zurich, Switzerland  
T: +41 44 864 18 00 | F: +41 44 864 18 01 info@hemrogroup.com | www.hemrogroup.com

Detailed information at:



[https://hemro.net\\_E65W\\_GbS\\_Product](https://hemro.net_E65W_GbS_Product)

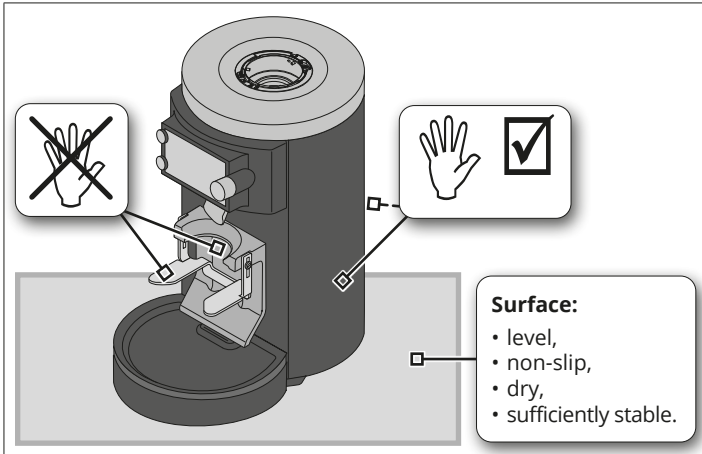


[https://hemro.net\\_E65W\\_GbS\\_Software\\_Manual](https://hemro.net_E65W_GbS_Software_Manual)

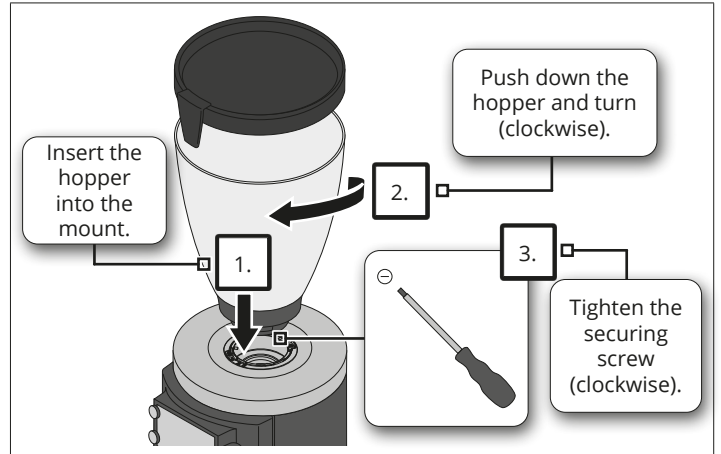


[https://hemro.net\\_E65W\\_GbS\\_Service\\_PlaylistYouTube](https://hemro.net_E65W_GbS_Service_PlaylistYouTube)

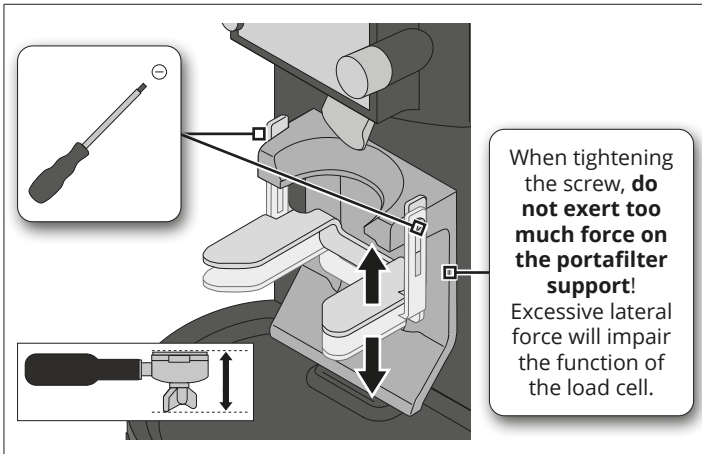
## Setting up the grinder



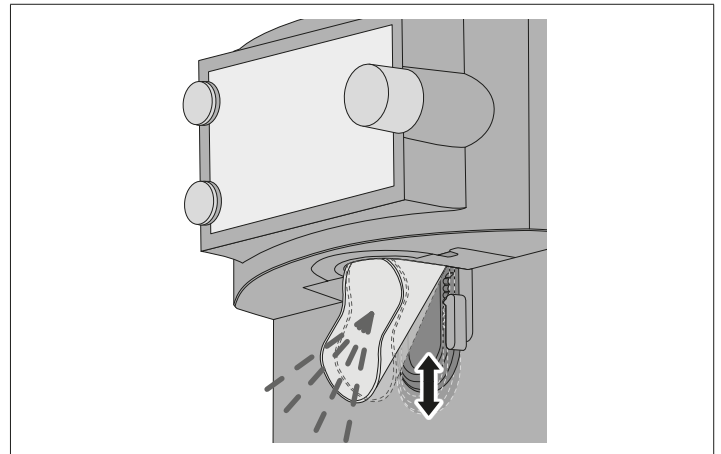
## Inserting the hopper



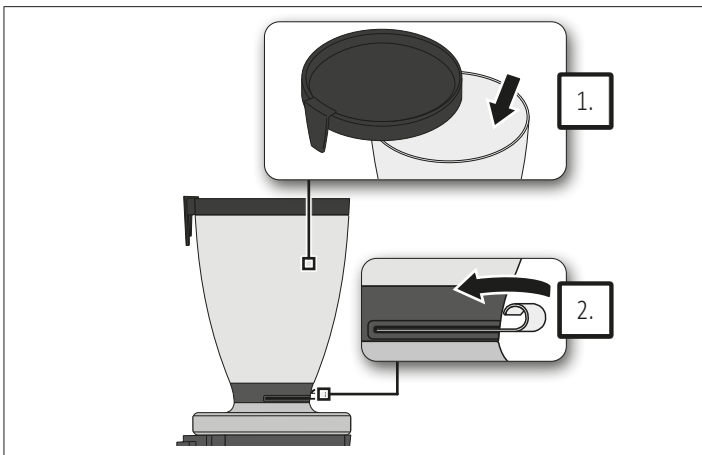
## Adjusting the portafilter support



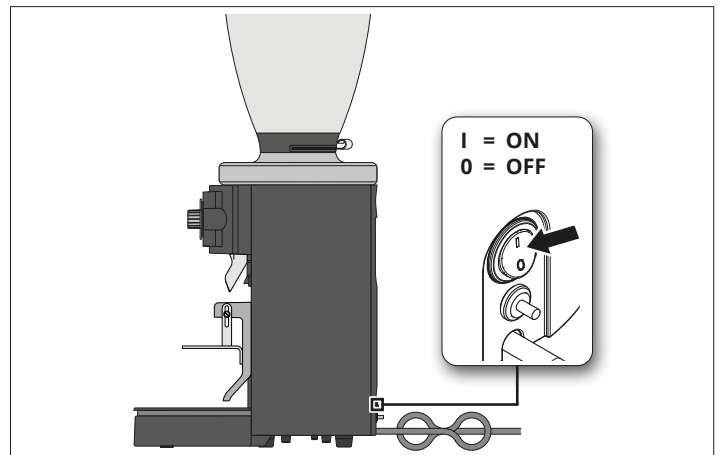
## Aligning the spout



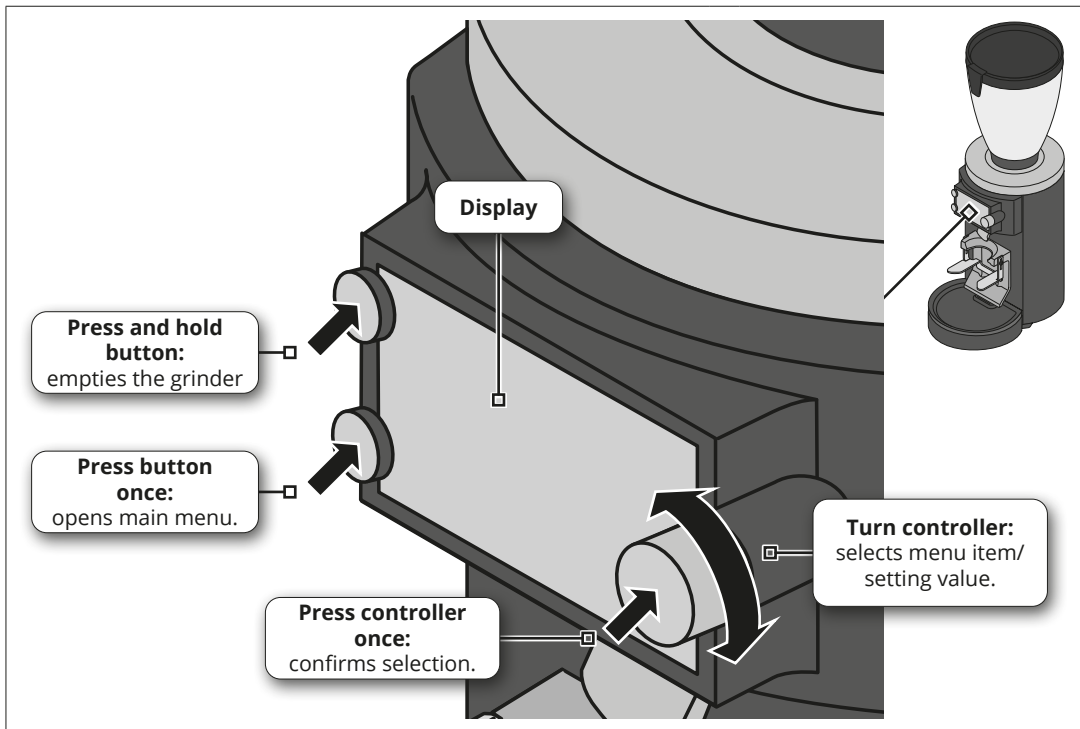
## Filling with beans and opening the slider



## Switching the grinder on/off



## Operating the grinder / main functions of the operating elements



For detailed operating information, see:

### Software manual



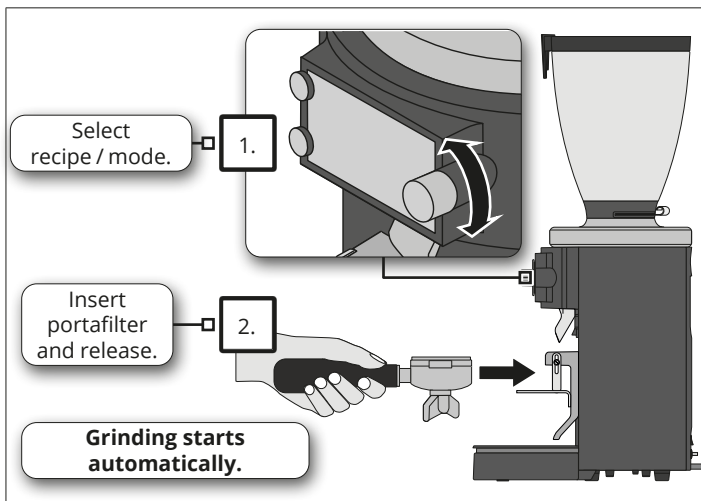
[https://hemro.net\\_E65W\\_GbS\\_Software\\_Manual](https://hemro.net_E65W_GbS_Software_Manual)

### Instruction manual

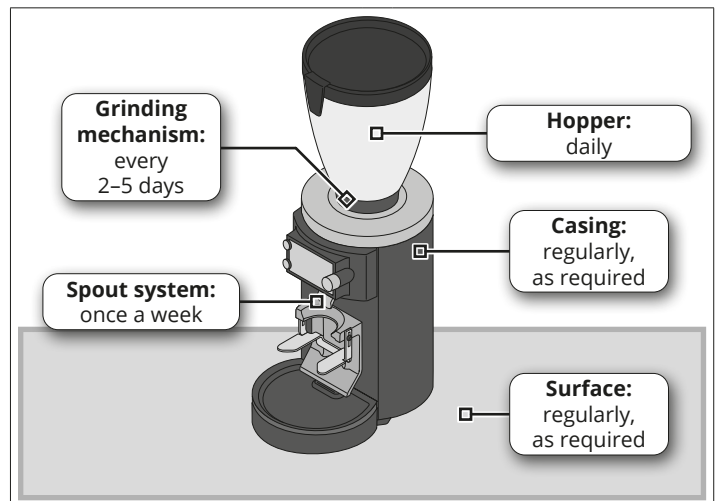


[https://hemro.net\\_E65W\\_GbS\\_Product](https://hemro.net_E65W_GbS_Product)

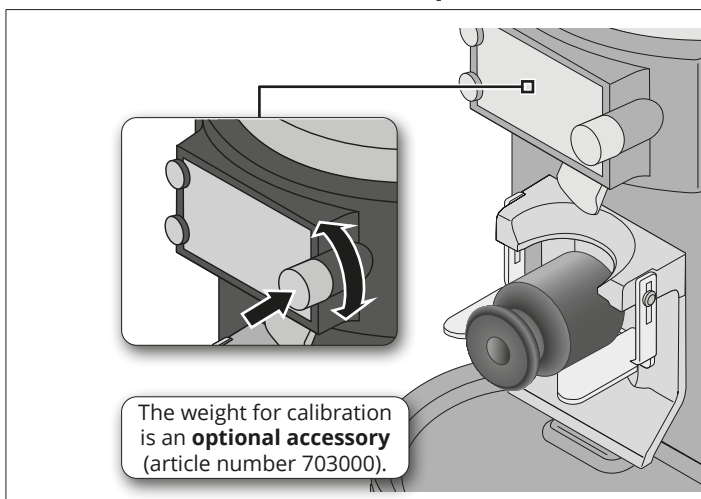
## Starting the grinding process



## Regular cleaning



## Calibrate the load cell (as required)



## Technical data

<b>Model:</b>	E65W GbS		
<b>Voltage   frequency   phase:</b>	100 V   50/60 Hz   1~   110-127 V   60 Hz   1~   220-240 V   50/60 Hz   1~		
<b>Protection type / Protection class:</b>	IPX1 / I ⚡		
<b>Back-up fuse:</b>	16 A-slow/15 A		
<b>Idle speed (50 / 60 Hz):</b>	1400 / 1700 rpm		
<b>Sound emission value<sup>1</sup>:</b>	70 dBA		
<b>Grinding capacity (fine-coarse)<sup>2</sup>:</b>	3-4 g / s @ 60 µm		
<b>Max. permitted operating cycle</b>			
100 V   50/60 Hz:	110-127 V   60 Hz:	220-240 V   50/60 Hz:	
2 double espressos / min (5 sec on / 25 sec off)	2 double espressos / min (4 sec on / 26 sec off)	3 double espressos / min (5 sec on / 15 sec off)	
<b>Max. grinding time:</b>	10 min in continuous operation		
<b>Max. daily output:</b>	30 kg		
<b>Dimensions (W × H × D):</b>	195 × 620 × 283 mm		
<b>Weight (net):</b>	12.2 kg		
<b>Max. hopper filling quantity<sup>3</sup>:</b>	1.2 kg		

1) while grinding.

2) The grinding capacity depends on the coffee bean type selected, the grinding degree selected and the power frequency. The value 60 µm corresponds to the grinding disc distance from the calibrated zero point.

3) Standard hopper