

COFFEE GRINDER X64 SD | QUICK GUIDE

Hemro International AG Thurgauerstrasse 80 | 8050 Zurich, Switzerland
T: +41 44 864 18 00 | F: +41 44 864 18 01 info@hemrogroup.com | www.hemrogroup.com

Detailed information at:

Product Page



https://hemro.net/X65SD_Product

Instruction Manual



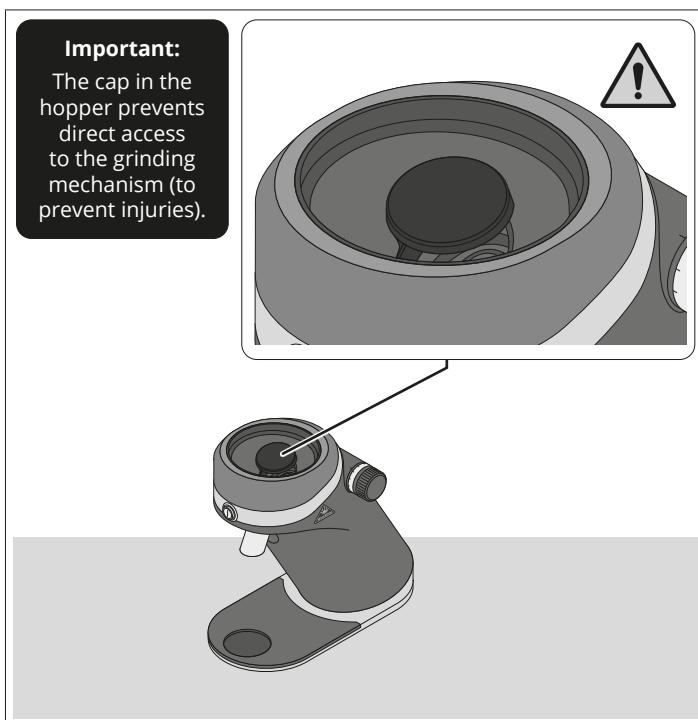
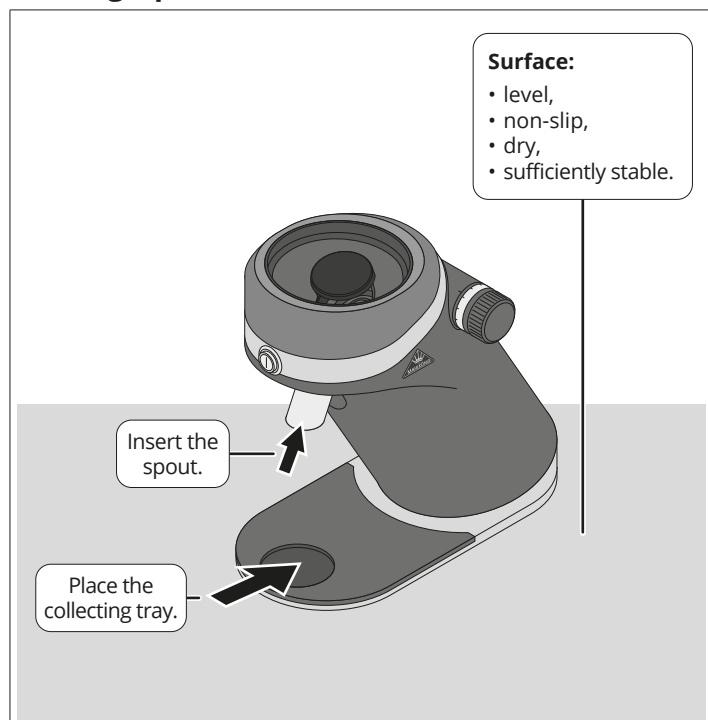
https://hemro.net/X64_SD_InstructionManual

Videos

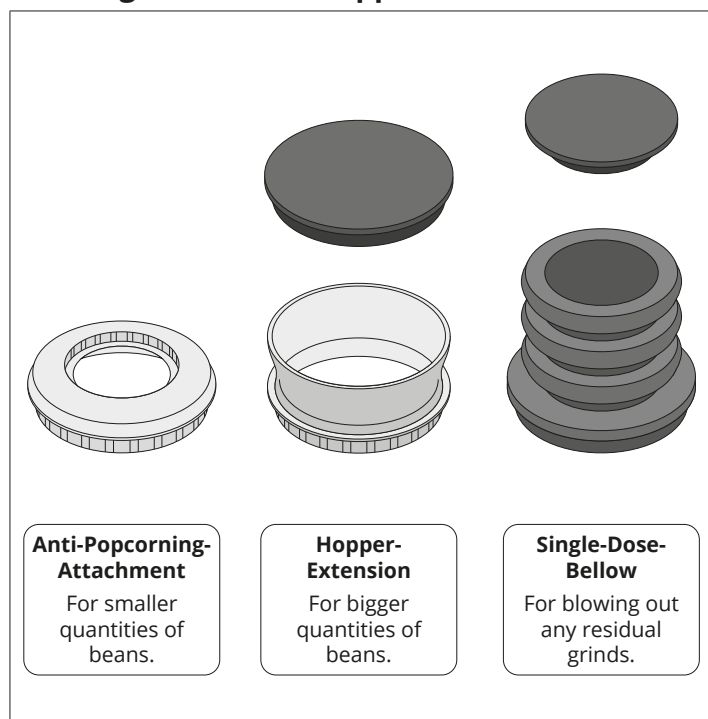


https://hemro.net/X64SD_Service_YouTube

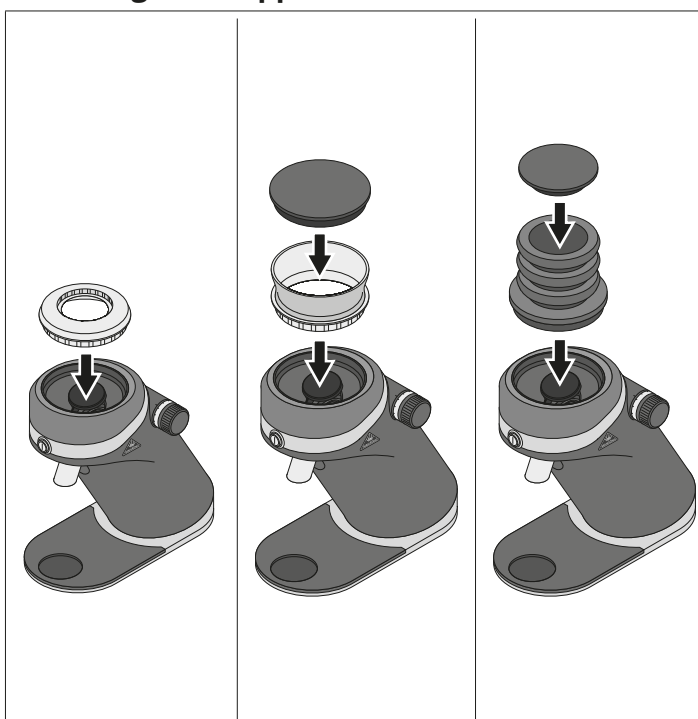
Setting Up The Grinder



Choosing One Of The Hopper Attachments




Inserting The Hopper Attachment



Operating The Grinder

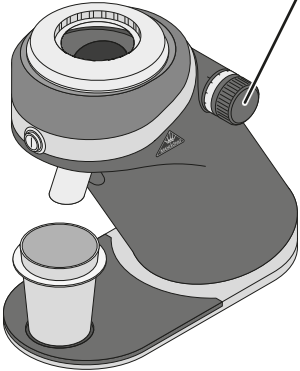
1

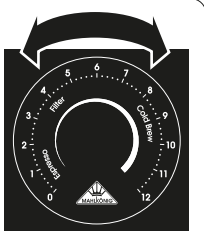
- Weigh the beans (in the cup).
- Fill the beans into the hopper.



2

Adjust the grinding degree.

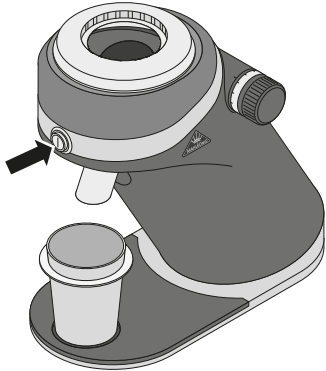




0 = finest setting
12 = coarsest setting

3

- Press and hold the button during grinding.
- Release the button to stop the grinding process.



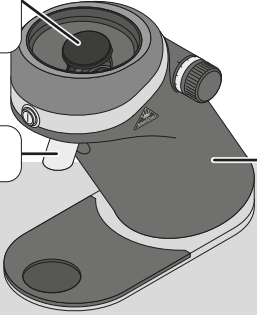
Regular Cleaning

Grinding mechanism:
every 2-5 days

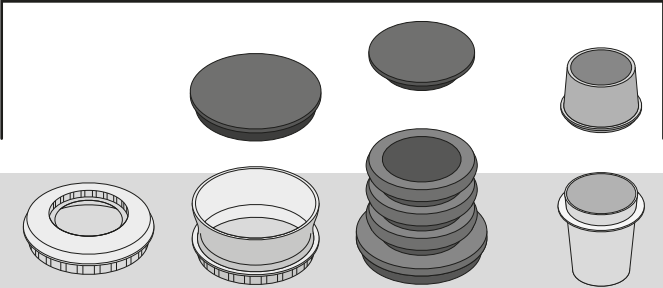
Spout system:
once a week

Casing:
regularly,
as required

Surface:
regularly,
as required



Hopper attachments + Cup:
daily



Technical Data

Model: X64 SD		Max. permitted operating cycle: 6 sec on / 54 sec off	
Voltage frequency:		Max. daily output**: 2.5 kg	
100 V 50/60 Hz	120 V 60 Hz	Dimensions (W × H × D): 143 × 249 × 253 mm	
Protection type: IPX1		Weight (net): 4.8 kg	
Protection class: I		Max. filling quantity	
Sound emission value*: 65 dBA		Anti-Popcorning-Attachment: ~30 g	
Grinding capacity (fine-coarse)**: 2.5-6 g / s		Hopper-Extension: ~100 g	
		Single-Dose-Bellow: ~80 g	

* While grinding.
* The grinding capacity depends on the coffee bean type selected, the grinding degree selected and the power frequency.